

# Petroleum

## PROFESSIONAL GRADE FEATURES



**ADJUSTABLE SOLID RUBBER HOSE STOP**  
for lead length positioning

**VERSATILE GUIDE ARM** adjusts to wall,  
floor, ceiling & vehicle mounting

**EXTERNAL FLUID PATH WITH FULL FLOW BRASS  
NPT SWIVEL** that screws directly on  
1" solid steel axle, swivel is easily  
removed for fast, easy maintenance

- Viewable on opposite side

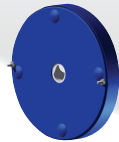


**HEAVY DUTY SPUN DISCS** with rolled edges for  
greater strength, made with first of it's kind CNC  
robotic spin cell

**HIGH QUALITY STEEL CONSTRUCTION**  
with our durable CPC™ powder coat finish

**ENCLOSED FACTORY TUNED AND MATCHED  
CARTRIDGE-STYLE SPRING MOTOR**, easily  
removed for safe & convenient replacement

- Viewable on opposite side



**TRIPLE AXLE SUPPORT WITH SUPER HUB™ &  
A FULL FRAME** increased reel strength for more  
demanding applications

Only on T Series. SH Series features dual axle support

## POSSIBLE FIELDS OF APPLICATION

- Fuel Storage & Dispensing System
- Fuel/Lube Trucks
- Aircraft Refueling
- DEF Storage & Dispensing System
- In Plant Refueling
- Ship Refueling
- Fuel Tank Trucks
- Vehicle Refueling
- Offshore

[www.coxreels.com](http://www.coxreels.com)

800.COX.REEL

P: 480.820.6396

F: 480.820.5132

E: [info@coxreels.com](mailto:info@coxreels.com)





## DEF SERIES & FUELING REELS

### FUEL SERIES

- Machined from solid brass 90° full-flow NPT swivel inlet
- Swivel Seals: NITRILE
- Fuel dispensing hose designed to convey non-aromatic fuels including diesel, kerosene, fuel oil & heating oil

### DEF SERIES

- Non-corrosive stainless steel 90° full-flow NPT swivel for Diesel Exhaust Fluid (DEF) dispensing applications
- Swivel Seals: VITON®
- DEF dispensing hose designed to convey the high-purity, aqueous urea solution DEF.

| FUEL MODEL | EZ-Coil® Safety Line | I.D. | FT. | PSI | APRX. LBS. | W x H x L                |
|------------|----------------------|------|-----|-----|------------|--------------------------|
| SHF-N-525  | EZ-SHF-525           | 3/4" | 25  | 300 | 57         | 9 3/8 x 25 1/2 x 19 1/2" |
| TSHF-N-550 | EZ-TSHF-525          | 3/4" | 50  | 300 | 91         | 9 7/8 x 25 1/2 x 24"     |
| TSHF-N-635 | -                    | 1"   | 35  | 300 | 95         | 10 x 25 1/2 x 24"        |
| TSHF-N-650 | -                    | 1"   | 50  | 300 | 101        | 12 x 25 1/2 x 24"        |

| DEF MODEL        | EZ-Coil® Safety Line | I.D. | FT. | PSI | APRX. LBS. | W x H x L            |
|------------------|----------------------|------|-----|-----|------------|----------------------|
| SH-N-525-DF-BBX  | EZ-SH-N-525-DF-BBX   | 3/4" | 25  | 300 | 57         | 8 1/4 x 21 1/4 x 24" |
| SH-N-550-DF-BBX  | EZ-SH-N-550-DF-BBX   | 3/4" | 50  | 300 | 76         | 9 7/8 x 25 1/2 x 24" |
| TSH-N-550-DF-BBX | EZ-TSH-N-550-DF-BBX  | 3/4" | 50  | 300 | 91         | 9 7/8 x 25 1/2 x 24" |



## SP SERIES

- External fluid paths with machined from solid brass 90° full-flow NPT swivel inlets
- Swivel Seals: NITRILE (AFLAS on 1" models)
- Reel features a sturdy box-style frame design. Reel adjusts to wall, floor, vehicle & overhead position
- Long lasting self-lubricated flange bearings for smooth rotation
- Available in Medium Pressure
- \* Supplied with fuel hose

| MODEL     | I.D.   | O.D.     | FT. | PSI | APRX. LBS. | W x H x L                 |
|-----------|--------|----------|-----|-----|------------|---------------------------|
| SLPL-550  | 3/4"   | 1 1/16"  | 50  | 300 | 86         | 19 5/8 x 20 1/2 x 22 7/8" |
| SLPF-550* | 3/4"   | 1 3/16"  | 50  | 300 | 107        | 19 5/8 x 20 1/2 x 22 7/8" |
| SLPL-575  | 3/4"   | 1 1/16"  | 75  | 300 | 117        | 19 5/8 x 24 1/2 x 26 3/8" |
| SLPL-650  | 1"     | 1 1/2"   | 50  | 300 | 109        | 19 5/8 x 24 1/2 x 26 3/8" |
| SLPF-650* | 1"     | 1 1/2"   | 50  | 300 | 142        | 21 x 28 1/2 x 30 3/8"     |
| SLPL-675  | 1"     | 1 1/2"   | 75  | 300 | 148        | 21 x 28 1/2 x 30 3/8"     |
| SLPL-750  | 1 1/2" | 1 13/16" | 50  | 250 | 123        | 18 x 28 1/2 x 30 3/8"     |
| SLPL-850  | 1 1/2" | 2 1/16"  | 50  | 250 | 138        | 20 x 28 1/2 x 30 3/8"     |



## 1125 SERIES

- External fluid path with machined from solid brass 90° full-flow NPT swivel inlet (Nickel plated steel swivel on 1" models)
- Swivel Seals: NITRILE (AFLAS on 1" models)
- Exclusive low profile outlet riser & open drum slot design for flat smooth hose wrap. All welded steel "A" frame construction for superior reel structure

| MODEL      | MOTOR OPTION                     | I.D. | FT. | PSI   | APRX. LBS. | W x H x L                 |
|------------|----------------------------------|------|-----|-------|------------|---------------------------|
| 1125-5-100 | Electric Motor Options Available | 3/4" | 100 | 3,000 | 42         | 26 3/4 x 18 3/4 x 17 5/8" |
| 1125-5-175 |                                  | 3/4" | 175 | 3,000 | 50         | 32 3/4 x 18 3/4 x 17 5/8" |
| 1125-5-200 |                                  | 3/4" | 200 | 3,000 | 55         | 38 3/4 x 18 3/4 x 17 5/8" |
| 1125-5-250 |                                  | 3/4" | 250 | 3,000 | 59         | 42 3/4 x 18 3/4 x 17 5/8" |
| 1125-6-50  |                                  | 1"   | 50  | 3,000 | 55         | 42 3/4 x 18 3/4 x 17 5/8" |
| 1125-6-100 |                                  | 1"   | 100 | 3,000 | 69         | 32 x 18 1/2 x 17 5/8"     |



## 1175 SERIES

- External fluid path with machined from solid brass 90° full-flow NPT swivel inlet
- Swivel Seals: AFLAS
- Exclusive low profile outlet riser, open drum slot design for flat smooth hose wrap. All welded steel "A" frame construction for superior reel structure

| MODEL      | MOTOR OPTION                     | I.D. | O.D.    | FT. | PSI   | APRX. LBS. | W x H x L             |
|------------|----------------------------------|------|---------|-----|-------|------------|-----------------------|
| 1175-6-50  | Electric Motor Options Available | 1"   | 1 7/16" | 50  | 3,000 | 67         | 24 1/8 x 26 1/8 x 24" |
| 1175-6-100 |                                  | 1"   | 1 7/16" | 100 | 3,000 | 70         | 28 1/8 x 26 1/8 x 24" |
| 1175-6-150 |                                  | 1"   | 1 7/16" | 150 | 3,000 | 75         | 32 1/8 x 26 1/8 x 24" |
| 1175-6-200 |                                  | 1"   | 1 7/16" | 200 | 3,000 | 83         | 36 5/8 x 26 1/8 x 24" |



## 1185 SERIES

- External fluid path with in-line aluminium straight, full flow NPT swivel inlet
- Swivel Seals: NITRILE
- Exclusive low profile outlet riser, open drum slot design for flat smooth hose wrap. All welded steel "A" frame construction for superior reel structure

| MODEL     | MOTOR OPTION                     | I.D.   | O.D.    | FT. | PSI | APRX. LBS. | W x H x L         |
|-----------|----------------------------------|--------|---------|-----|-----|------------|-------------------|
| 1185-1124 | Electric Motor Options Available | 1 1/2" | 2 1/16" | 50  | 600 | 76         | 25 x 26 x 24"     |
| 1185-1524 |                                  | 1 1/2" | 2 1/16" | 75  | 600 | 81         | 29 x 26 x 24"     |
| 1185-2024 |                                  | 1 1/2" | 2 1/16" | 100 | 600 | 94         | 33 1/2 x 26 x 24" |
| 1185-2528 |                                  | 1 1/2" | 2 1/16" | 150 | 600 | 122        | 38 1/2 x 30 x 28" |



## 1195 SERIES

- External fluid path with in-line aluminium straight, full flow NPT swivel inlet
- Swivel Seals: VITON®
- Exclusive low profile outlet riser, open drum slot design for flat smooth hose wrap. All welded steel "A" frame construction for superior reel structure

| MODEL     | MOTOR OPTION                     | I.D. | O.D.    | FT. | PSI | APRX. LBS. | W x H x L             |
|-----------|----------------------------------|------|---------|-----|-----|------------|-----------------------|
| 1195-932  | Electric Motor Options Available | 2"   | 2 9/16" | 50  | 600 | 128        | 22 3/4 x 33 1/4 x 32" |
| 1195-1332 |                                  | 2"   | 2 9/16" | 75  | 600 | 148        | 26 3/4 x 33 1/4 x 32" |
| 1195-2032 |                                  | 2"   | 2 9/16" | 115 | 600 | 186        | 30 3/4 x 33 1/4 x 32" |

### CHOICE OF MOTORS



## SD SERIES

- Available with 7 strand x 7 wire galvanized steel
- Models SD-XX-1 & SDH-XXX-1 come with 7 strand x 7 stainless steel cable
- High visibility orange vinyl cable cover
- Compact static discharge cable reel available in spring rewind or direct hand crank retraction
- Non corrosive stainless steel spring, pawl & zinc plated ratchet

| MODEL     | EZ-Coil® Safety Line | O.D.  | FT. | APRX. LBS. | W x H x L            |
|-----------|----------------------|-------|-----|------------|----------------------|
| SD-35     | EZ-SD-35             | 5/32" | 35  | 18         | 3 7/8 x 11 1/2 x 11" |
| SD-50     | EZ-SD-50             | 5/32" | 50  | 20         | 3 7/8 x 11 1/2 x 11" |
| SD-75     | EZ-SD-75             | 5/32" | 75  | 31         | 4 x 15 x 14 1/2"     |
| SD-100    | EZ-SD-100            | 5/32" | 100 | 32         | 4 x 15 x 14 1/2"     |
| SD-35-1   | EZ-SD-35-1           | 5/32" | 35  | 18         | 3 7/8 x 11 1/2 x 11" |
| SD-50-1   | EZ-SD-50-1           | 5/32" | 50  | 20         | 3 7/8 x 11 1/2 x 11" |
| SD-75-1   | EZ-SD-75-1           | 5/32" | 75  | 31         | 4 x 15 x 14 1/2"     |
| SD-100-1  | EZ-SD-100-1          | 5/32" | 100 | 32         | 4 x 15 x 14 1/2"     |
| SDH-100   | -                    | 5/32" | 100 | 24         | 5 3/4 x 11 1/2 x 11" |
| SDH-200   | -                    | 5/32" | 200 | 28         | 5 3/4 x 11 1/2 x 11" |
| SDH-100-1 | -                    | 5/32" | 100 | 24         | 5 3/4 x 11 1/2 x 11" |
| SDH-200-1 | -                    | 5/32" | 200 | 28         | 5 3/4 x 11 1/2 x 11" |

This selection only represents a sample of products applicable in this industry. Please visit us online or consult the factory for more product options.